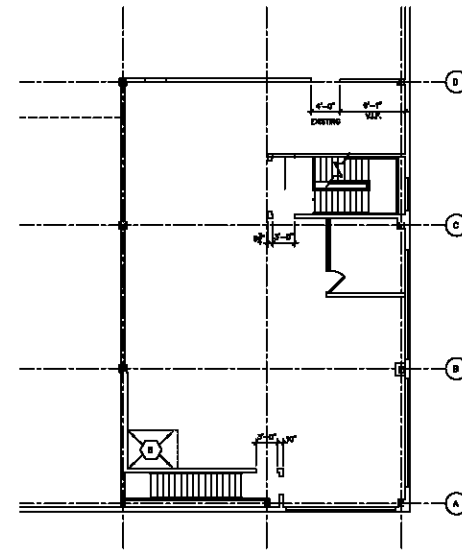
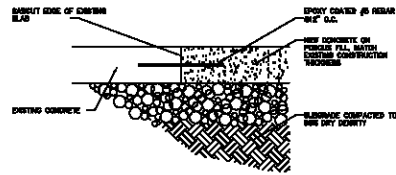


- GENERAL NOTES:  
 A. PROTECT ALL CONSTRUCTION TO REMAIN.  
 B. SEAL ALL PERIMETER SLAB JOINTS AND CONSTRUCTION JOINTS.

KEYED NOTES:

- |   |   |  |
|---|---|--|
| 1 REMOVE EXISTING SLAB.   | 8 EXISTING WALLS, DOORS, DELIMITERS & WINDOWS TO REMAIN.  | 11 NO WORK TO CONCRETE SLAB IN THIS ROOM.                                      |
| 2 POUR IN-FILL CONCRETE PER 3/A101.   | 9 NOT USED.   | 12 PATCH & REPAIR CONCRETE SURFACE AS REQUIRED TO RECEIVE SCHEDULED FINISH.    |
| 3 REMOVE EXISTING WALL & ROOF. REMOVE CONCRETE W/RT ASHC. SEE SECTION 1/A101.               | 10 MECHANICALLY ABRADE OR BUSHBLAST EXISTING CONCRETE SURFACE TO RECEIVE GRANULAR S/LC.   | 13 REMOVE EXISTING METAL AND CHAL WALL. RECONSTRUCT FOR NEW CEILING, 84" HIGH. |
| 4 REMOVE EXISTING OVERHEAD DOOR & TRACER.   | 11 BUSHBLAST & CLEAN EXISTING CONCRETE SURFACES TO RECEIVE 3/4" FIBER FILL. PRODUCE WORK, FILL CHANGE OVER 1/4" AND LEVEL SLAB. | 14 IN-FILL CONCRETE AT REMOVED WALL PER 3/A101.                                |
| 5 SEAL JOINTS FOR THE FLOORING W/RT. COORDINATE LOCATION & EXTENT W/RT FLOORING CONTRACTOR. | 12 REMOVE CONCRETE SLAB, THIS AREA FOR FUTURE CHG'T.  |  |



ELKIN / SOBOLTA & ASSOCIATES  
 19 PARK AVENUE  
 VOEGEL 001.933.2511

MICHAEL A. ELKIN, AIA  
 SUPERVISING ARCHITECT

MICHAEL A. SOBOLTA, AIA  
 P.E. L.E. 0020

STRUCTURAL ENGINEER  
 ALLIED ENGINEERING, INC.  
 87 TAMM DRIVE  
 VOEGEL 001.933.1394

MECHANICAL/ELECTRICAL ENGINEER  
 A/C DESIGN  
 75 HAVEN AVENUE  
 VOEGEL 001.933.0103

CONTRACT NO. 2001-014  
 SHEET NO. 2001-014-01

NO.	DATE	BY	DESCRIPTION
1	08/14/01	MM	ISSUED FOR BIDDING

LYNDHURST RECREATION CENTER

OWNER  
 CHEROKEE NORTHEAST, LLC  
 ONE WINDSORLAND PLACE  
 EAST RUTHERFORD, NJ 07073

DRAWING TITLE  
 PHASE II  
 DEMOLITION PLAN/  
 SLAB PLAN

SCALE: 1/8" = 1'-0"  
 DATE: SEP. 08