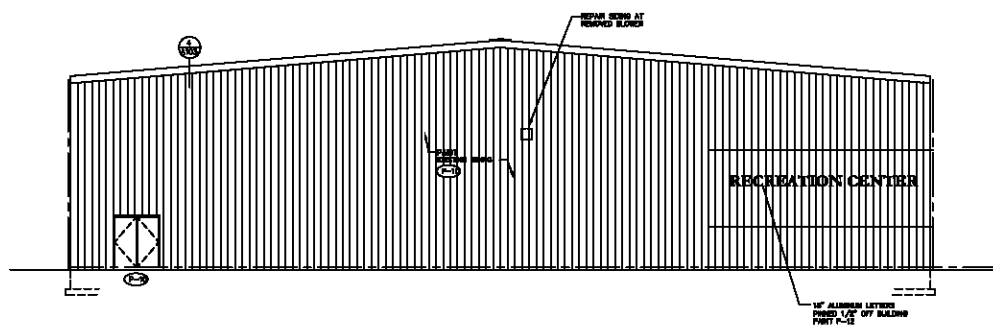


4 SOUTH ELEVATION
 AISC SCALE: 1/8" = 1'-0"



3 WEST ELEVATION
 AISC SCALE: 1/8" = 1'-0"



ELKIN / SOBOLTA & ASSOCIATES
 19 PARK AVENUE NORTHROCK RD 07078-1711
 VERONA NJ 07078-1711 FAX: 908.393.8722

MICHAEL A. ELKIN, AIA
 INTERIOR ARCHITECT

GEORGETTE A. SOBOLTA, AIA
 22 E. LEE ST.
 CHICAGO, IL 60604

STRUCTURAL ENGINEER
 ALLIED ENGINEERING, INC.
 87 N. LAKE STREET FARMINGTON LAKE, NJ 08033
 VERONA, NJ 07078-1194 FAX: 908.461.4500

MECHANICAL AND ELECTRICAL ENGINEER
 A/C DESIGN
 75 BRAVER AVENUE CHRYSTLER TOWER BUILDING
 VERONA, NJ 07078 FAX: 908.461.4500

COPYRIGHT 2004 SOBOLTA AND ASSOCIATES
 THIS DRAWING IS THE PROPERTY OF SOBOLTA AND ASSOCIATES. NO PART OF THIS DRAWING OR THE INFORMATION CONTAINED HEREIN MAY BE REPRODUCED OR TRANSMITTED IN ANY FORM OR BY ANY MEANS, ELECTRONIC OR MECHANICAL, WITHOUT THE WRITTEN APPROVAL OF SOBOLTA AND ASSOCIATES.

THIS DRAWING AND THE INFORMATION CONTAINED HEREIN ARE THE PROPERTY OF SOBOLTA AND ASSOCIATES. NO PART OF THIS DRAWING OR THE INFORMATION CONTAINED HEREIN MAY BE REPRODUCED OR TRANSMITTED IN ANY FORM OR BY ANY MEANS, ELECTRONIC OR MECHANICAL, WITHOUT THE WRITTEN APPROVAL OF SOBOLTA AND ASSOCIATES.

1	DATE	ISSUED FOR REVIEW	DESCRIPTION

LYNDHURST
 RECREATION
 CENTER

OWNER
 CHEROKEE NORTHEAST, LLC
 ONE WINDSORLAND PLACE
 EAST RUTHERFORD, NJ 07073

DRAWING TITLE
 EXTERIOR
 ELEVATIONS

NO. 104-05 SCALE AS SHOWN
 DATE: SEP. 09
 SHEET NO. A202