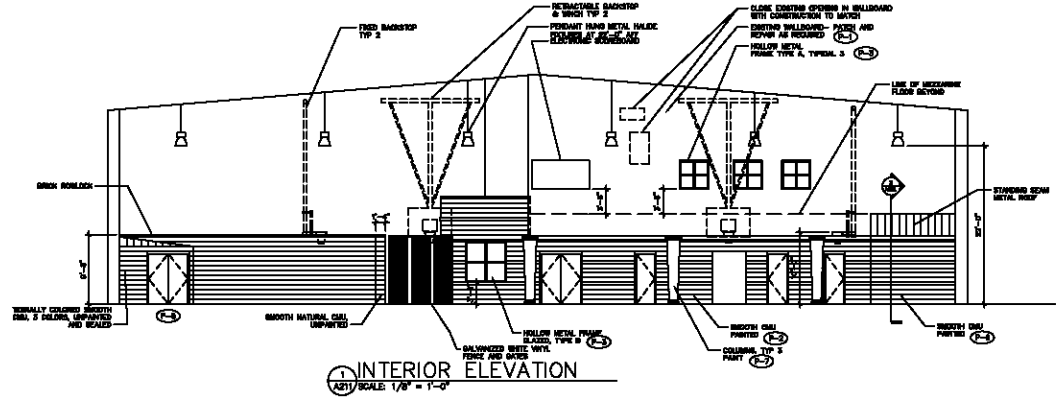
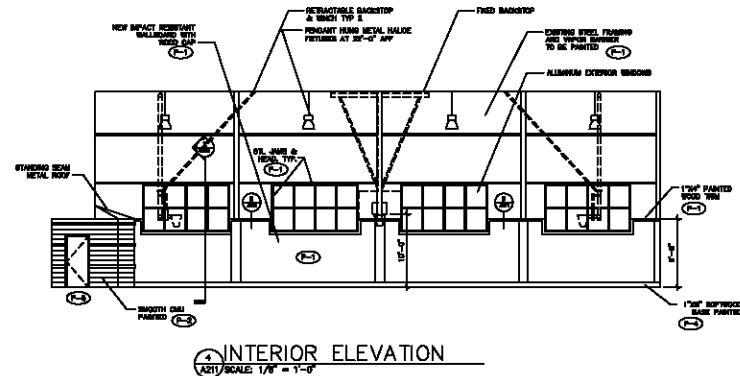


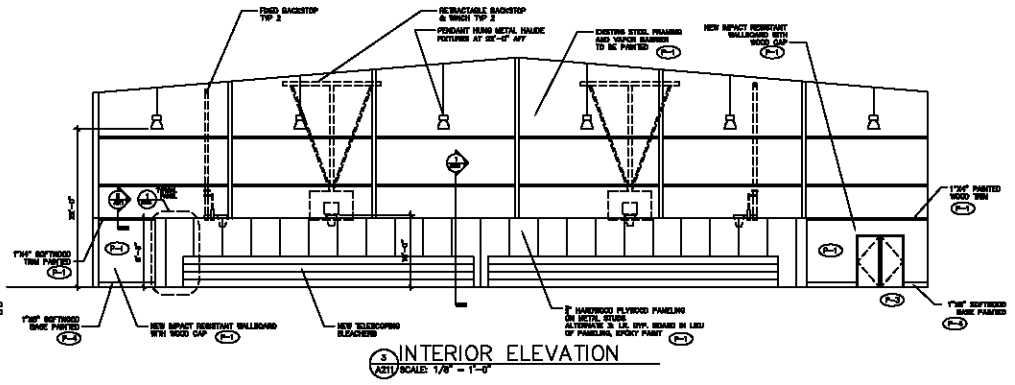
1 INTERIOR ELEVATION
 (AS1) SCALE: 1/8" = 1'-0"



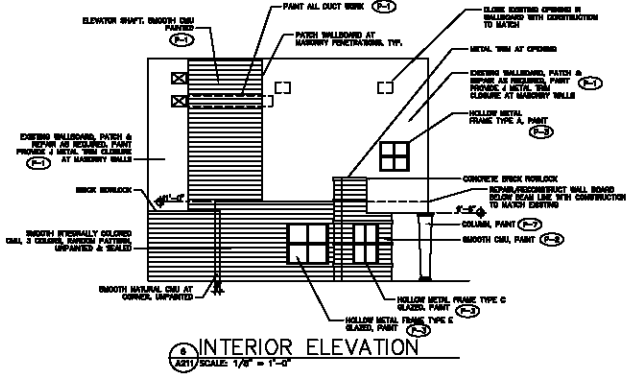
2 INTERIOR ELEVATION
 (AS1) SCALE: 1/8" = 1'-0"



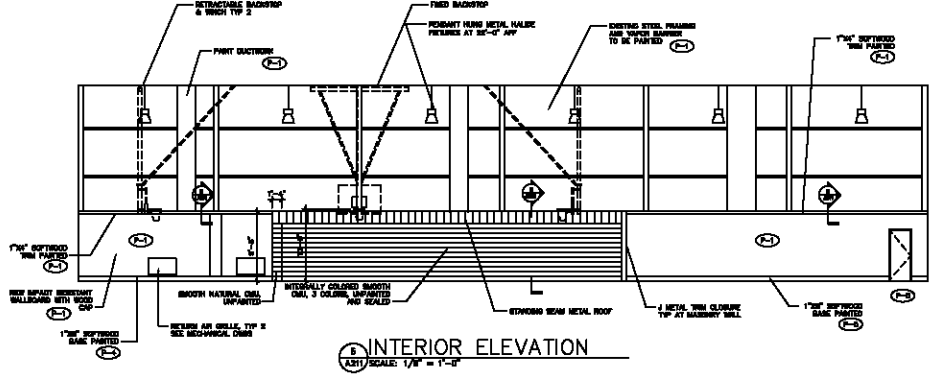
3 INTERIOR ELEVATION
 (AS1) SCALE: 1/8" = 1'-0"



4 INTERIOR ELEVATION
 (AS1) SCALE: 1/8" = 1'-0"



5 INTERIOR ELEVATION
 (AS1) SCALE: 1/8" = 1'-0"



6 INTERIOR ELEVATION
 (AS1) SCALE: 1/8" = 1'-0"

ES-A ARCHITECTS
 ELKIN / SOBOLTA & ASSOCIATES
 18 PARK AVENUE SOUTH FORD MD 20779-1771
 VOICED 301.483.2511 FAX 301.823.8722

MICHAEL A. ELKIN, AIA
 ARCHITECT
 MICHELE A. SOBOLTA, AIA
 ARCHITECT

MICHAEL A. SOBOLTA, AIA
 SEATTLE, WASH
 OF LE 522

REGISTERED ARCHITECT
 ALLIED ENGINEERING, INC.
 87 HANCOCK STREET
 WOODS BRIDGE, MD 20799
 VOICED 301.477.1144 FAX 301.477.1148

REGISTERED MECHANICAL ENGINEER
 A/C DESIGN
 15 EDWARDS AVENUE
 VOICES 919.924.8103

REGISTERED ELECTRICAL ENGINEER
 A/C DESIGN
 15 EDWARDS AVENUE
 VOICES 919.924.8103

CONTRACT NO.

SYMBOLS AND ABBREVIATIONS

THIS DOCUMENT IS THE PROPERTY OF ES-A ARCHITECTS AND THE REVISIONS OF THE ORIGINAL CONTRACT DOCUMENTS SHALL BE THE PROPERTY OF ES-A ARCHITECTS. ANY REVISIONS TO THE ORIGINAL CONTRACT DOCUMENTS SHALL BE MADE BY THE ORIGINAL CONTRACT DOCUMENTS. ANY REVISIONS TO THE ORIGINAL CONTRACT DOCUMENTS SHALL BE MADE BY THE ORIGINAL CONTRACT DOCUMENTS. ANY REVISIONS TO THE ORIGINAL CONTRACT DOCUMENTS SHALL BE MADE BY THE ORIGINAL CONTRACT DOCUMENTS.

DATE

NO. OF SHEETS

DATE

LYNDHURST RECREATION CENTER

OWNER
 CHEROKEE NORTHEAST, LLC
 ONE WOODLAND PLACE
 EAST RICHMOND, VA 23073

DRAWING TITLE
 INTERIOR ELEVATIONS

DATE: 05-24-05 SCALE: AS SHOWN
 SHEET: 10 OF 20 CITY: VA