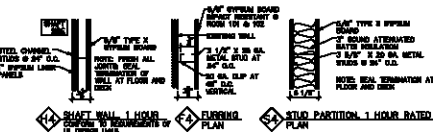
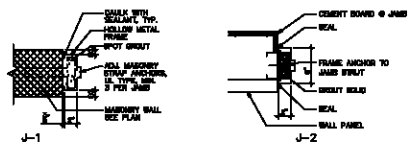


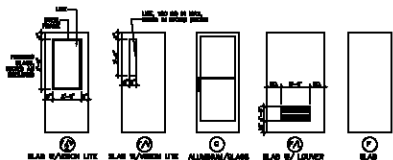
WALL TYPES  
NOT TO SCALE



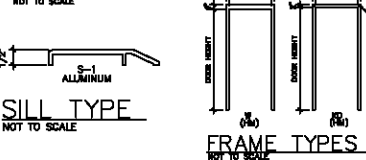
WALL TYPES  
NOT TO SCALE



JAMB TYPE  
NOT TO SCALE



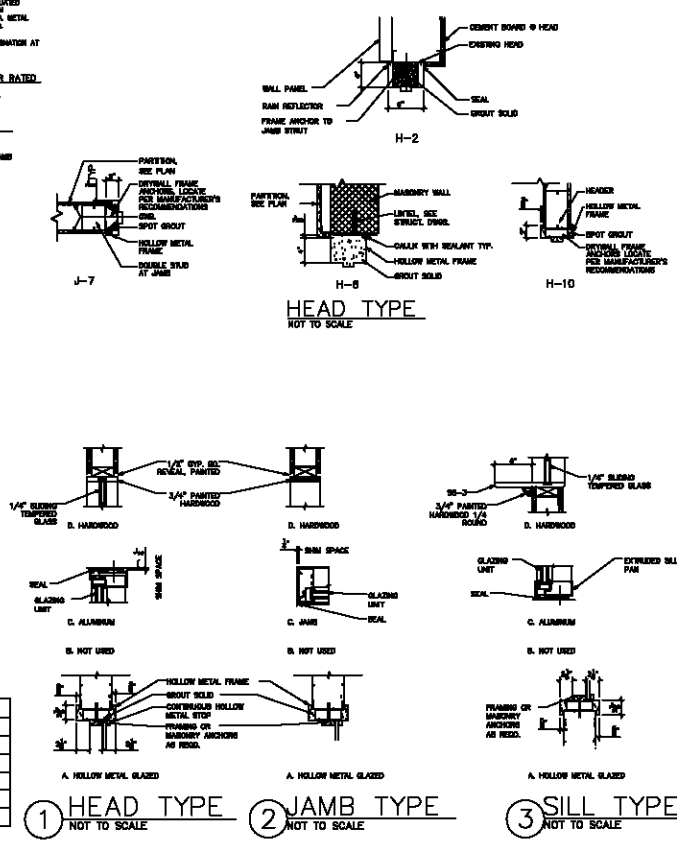
DOOR TYPES  
NOT TO SCALE



SILL TYPE  
NOT TO SCALE

FRAME TYPES  
NOT TO SCALE

| MARK | SIZE          | FRAME | FINISH  | GLAZING    | HEAD | JAMB | SILL | REMARKS      |
|------|---------------|-------|---------|------------|------|------|------|--------------|
| ⊙    | 2'-0" x 2'-0" | HM    | PAINTED | 1/4" CLEAR | 1A   | 2A   | 3A   | RELIED TO SA |
| ⊙    | 2'-0" x 2'-0" | ALUM  | PAINTED | 1/4" CLEAR | 1A   | 2A   | 3A   | RELIED TO SA |
| ⊙    | 2'-0" x 2'-0" | HM    | PAINTED | 1/4" CLEAR | 1A   | 2A   | 3A   | RELIED TO SA |
| ⊙    | 2'-0" x 2'-0" | HM    | PAINTED | 1/4" CLEAR | 1A   | 2A   | 3A   | RELIED TO SA |
| ⊙    | 2'-0" x 2'-0" | HM    | PAINTED | 1/4" CLEAR | 1A   | 2A   | 3A   | RELIED TO SA |



1 HEAD TYPE NOT TO SCALE  
2 JAMB TYPE NOT TO SCALE  
3 SILL TYPE NOT TO SCALE

| LOCATION     | DOOR NO. | LOCATION          | DOOR   |       |        |        |      |      |      |      |      |          | FRAME           |      |      | DETAILS |  |  |
|--------------|----------|-------------------|--------|-------|--------|--------|------|------|------|------|------|----------|-----------------|------|------|---------|--|--|
|              |          |                   | SIZE   |       |        | MNT.   | TYPE | FIN. | MNT. | TYPE | FIN. | HARDWARE | HARDWARE (TYPE) | HEAD | JAMB | SILL    |  |  |
|              |          |                   | W      | H     | THK    |        |      |      |      |      |      |          |                 |      |      |         |  |  |
| FIRST FLOOR  | 101      | COURT             | 03'-0" | 7'-0" | 1 3/4" | HM     | F    | *    | HM   | W    | *    | 1        | H-2             | J-3  | S-1  |         |  |  |
|              | 101A     | STORAGE           | 03'-0" | 7'-0" | 1 3/4" | HM     | F    | *    | HM   | W    | *    | 2        | H-6             | J-1  | -    |         |  |  |
|              | 101B     | MISCELL           | 03'-0" | 8'-0" | 1"     | SPR LK | -    | NONE | NONE | NONE | NONE | NONE     | NONE            | NONE | NONE |         |  |  |
|              | 102A     | LOBBY EXTERIOR    | 03'-0" | 7'-0" | 1 3/4" | HM     | B    | -    | ALUM | W    | 1    | 3        | -               | -    | -    |         |  |  |
|              | 102B     | LOBBY INTERIOR    | 03'-0" | 7'-0" | 1 3/4" | HM     | F    | -    | ALUM | W    | 1    | 3        | H-4             | J-1  | -    |         |  |  |
|              | 104      | METER ROOM        | 2'-0"  | 7'-0" | 1 3/4" | HM     | F    | -    | HM   | W    | *    | 4        | H-10            | J-2  | -    |         |  |  |
|              | 105      | ELECTRICAL ROOM   | "      | "     | "      | HM     | F    | -    | HM   | W    | *    | 5        | H-8             | J-1  | -    |         |  |  |
|              | 106      | SPRINKLER ROOM    | "      | "     | "      | HM     | F    | -    | HM   | W    | *    | 6        | H-4             | J-1  | -    |         |  |  |
|              | 107      | EQUIPMENT STORAGE | "      | "     | "      | HM     | F    | -    | HM   | W    | *    | 7        | H-4             | J-1  | -    |         |  |  |
|              | 108      | OFFICE            | "      | "     | "      | HM     | F    | -    | HM   | W    | *    | 8        | H-10            | J-2  | -    |         |  |  |
| SECOND FLOOR | 109      | SEWATER MASH. RM  | 00     | 00    | 00     | 00     | *    | DO   | DO   | *    | 0    | 00       | 00              | 00   |      |         |  |  |
|              | 110      | OFFICE            | 2'-0"  | 7'-0" | 1 3/4" | HM     | F    | -    | HM   | W    | 7    | H-10     | J-2             | -    |      |         |  |  |
|              | 111      | OFFICE            | 00     | 00    | 00     | 00     | 00   | 00   | 00   | 00   | 00   | 00       | 00              | 00   |      |         |  |  |
|              | 112      | OFFICE            | "      | "     | "      | "      | "    | "    | "    | "    | "    | 00       | 00              | 00   |      |         |  |  |
|              | 113      | OFFICE            | "      | "     | "      | "      | "    | "    | "    | "    | "    | 00       | 00              | 00   |      |         |  |  |
|              | 114      | JANITRY           | 2'-0"  | 7'-0" | 1 3/4" | HM     | F    | -    | HM   | W    | 8    | H-10     | J-2             | -    |      |         |  |  |
|              | 115      | CONDOOR           | "      | "     | "      | HM     | F    | -    | HM   | W    | 9    | H-4      | J-1             | -    |      |         |  |  |
|              | 116      | SEMAN             | "      | "     | "      | "      | "    | "    | "    | "    | "    | 9        | H-4             | J-1  | -    |         |  |  |
|              | 117      | MEN               | "      | "     | "      | "      | "    | "    | "    | "    | "    | 9        | H-4             | J-1  | -    |         |  |  |
|              | STAIRS   | 202               | OFFICE | 00    | 00     | 00     | 00   | 00   | 00   | 00   | 00   | 00       | 00              | 00   | 00   |         |  |  |
| 203          |          | TOILET            | 2'-0"  | 7'-0" | 1 3/4" | HM     | F    | -    | HM   | W    | 8    | H-10     | J-2             | -    |      |         |  |  |

NOTED: ALUMINUM EXTERIOR. SEE SPECIFICATIONS FOR FINISH.  
SEE INTERIOR ELEVATIONS

**ES-A**  
ARCHITECTS

ELKIN / SOBOLTA & ASSOCIATES  
19 PARK AVENUE  
ROCHESTER, NY 14609-1711  
VOICED 581.593.5511 FAX 581.593.5752

MICHAEL A. ELKIN, AIA  
MICHAEL A. SOBOLTA, AIA  
MICHAEL A. SOBOLTA, AIA  
22 LEE CIRCLE  
ROCHESTER, NY 14609-1711  
VOICED 581.593.5511 FAX 581.593.5752

EDUCATIONAL ENGINEER  
ALLIED ENGINEERING, INC.  
875 N. STATE STREET  
ROCHESTER, NY 14609-1711  
VOICED 581.593.5511 FAX 581.593.5752

EDUCATIONAL ARCHITECTURAL ENGINEER  
A/C DESIGN  
19 PARK AVENUE  
ROCHESTER, NY 14609-1711  
VOICED 581.593.5511 FAX 581.593.5752

OWNER  
CHEROKEE NORTHEAST, LLC  
ONE WOODLAND PLACE  
ELK BROOKFIELD, NY 14609

DRAWING TITLE  
DOOR SCHEDULE  
WALL TYPES  
WINDOW SCHEDULE

NO. 104-00-00 DATE: 04/18/00  
DATE: 04/18/00

A600